

# Ready to take off for your CPHI & PMEC China experience?

Your pre-flight checklist for Asia's biggest pharma show



**Meetings  
scheduled**



**Exhibitors  
bookmarked**



**Ready for pharma  
innovation**



**Asia's largest pharmaceutical sourcing event**, where the building blocks of pharma are sourced and supplied

**16-18 June 2026**

Shanghai New International Expo Center  
Shanghai, China

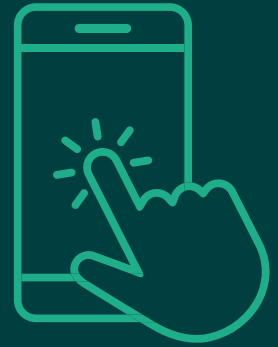
## Essential travel checklist

- Passport & Visa\* ready
- Flights booked to Shanghai
- Accommodation confirmed
- Travel insurance active
- Business cards printed (bilingual recommended)

**110,000+** attendees | **3,600+** exhibitors | **100+** content sessions & activities

# Plan before you go

## Web platform & app



## Start your journey before you even leave home

- **Browse complete exhibitor directory** and product catalogues
- **Access full conference session schedules** and speaker lineup
- **Interactive floorplan** for booth location planning
- **Bookmark exhibitors** of interest for easy onsite navigation

[View online](#)

## Download our event planner app before departure

### Key onsite features:

- Real-time meeting notifications
- Interactive maps with GPS navigation
- Live updates and schedule changes

### Login info:

- Pre-registered email + OTP for visitors

## Connect before the show

Maximise your onsite time by using the Chat & Meet feature to connect with exhibitors and schedule meetings in advance

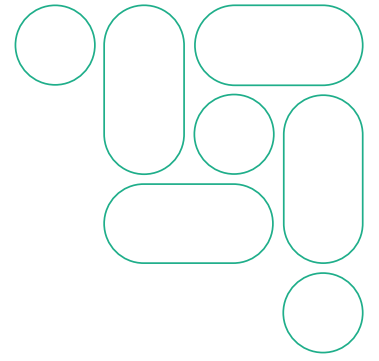
**Start networking now – don't wait until you're onsite**

## Get to grips with regional business norms in China

Watch this handy video for essential tips



# Discover 2026's breakthrough zones



## New specialised areas:

- **International brands** – 200+ exhibitors from 26 countries including Merck, Servier, Dr. Reddy's, Zydus Lifescience
- **TCM ingredients & slices** – Traditional Chinese medicine focus with Zhejiang Sanhe Bio-tech, YOUTHSUN HERBS
- **Frontier technologies & innovative therapies** – Biotech innovations featuring Zhejiang Zerui Biopharma, Shanghai MediumBank Biotechnology
- **Medical aesthetic packaging** – Specialized packaging solutions with eSUNMed Biotechnology, Hangzhou Qiantang Longyue
- **Drug-device combinations** – Integration solutions from Ypsomed, Becton Dickinson, SHANDONG WEGO PREFILLS
- **Smart lab space** – Laboratory innovations with TESTO INSTRUMENTS, LabVantage Solutions, Honeywell

## 100+ sessions, 700+ expert speakers

**2026 CPHI International  
Regulatory Agencies  
Updates and Q&A  
Session**      **17 June 2026**  
**09:15-17:15**  
Hall E2 Meeting  
Room M19

**The 11th CPHI Biopharma  
Innovation & Frontiers  
Forum:**      **16 June 2026**  
**13:00-16:30**  
Hall W4 Meeting  
Room M6  
**Main Session: Innovation  
Upgrade & Ecosystem  
Collaboration**

**The 13th PMEC China  
Pharmaceutical  
Engineering**      **17 June 2026**  
**13:30-15:30**  
Hall W10 Onsite  
Forum Area  
**Summit – Session 2:  
Pharmaceutical Factory  
Upgrading and Innovating**      **Booth B66**

## International brands pavilion upgrade

Hall E1.1 The international brands pavilion features upgraded space with renowned names like Almac Group, Octapharma AG, Polifarma, plus exciting new exhibitors including Evonik Industries AG, FAMAR, Micro-Pak.

Get a taste of what's waiting for you – check out these amazing highlights from CPHI & PMEC China 2025



# Shanghai beyond the show

Make the most of your Shanghai stay

## Top 5 Shanghai experiences:

- 1. The Bund** - Iconic waterfront promenade with stunning skyline views, best visited at sunset for illuminated cityscape
- 2. Yu Garden & Yuyuan Bazaar** - 400-year-old classical Chinese garden with traditional architecture, plus bustling market for local snacks and souvenirs
- 3. Oriental Pearl Tower** - Shanghai's most recognisable landmark with multiple observation decks and glass-bottom floors
- 4. Shanghai French Concession** - Historic district with tree-lined streets, boutique shopping, and European-style architecture
- 5. Nanjing Road** - Famous pedestrian shopping street with international brands, local stores, and vibrant night lights



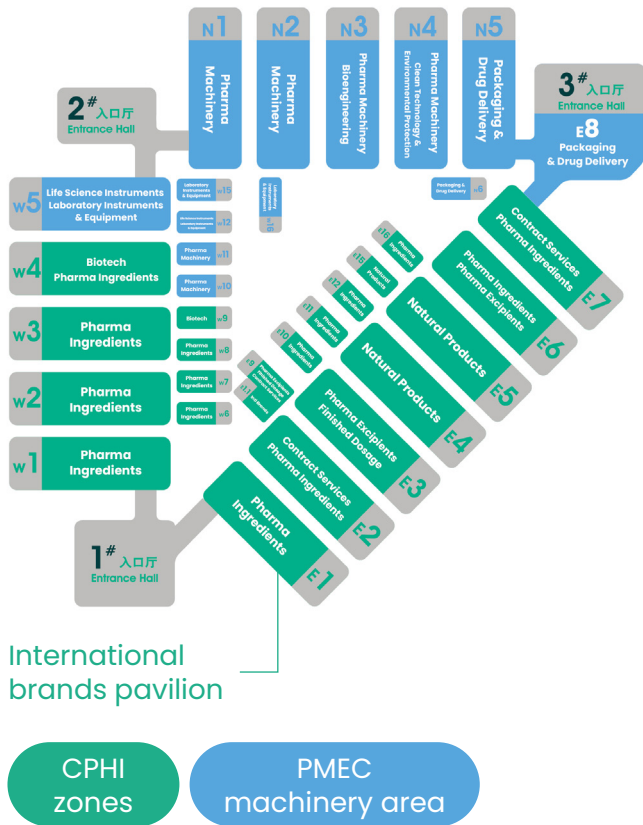
## Top 5 Shanghai experiences:

Navigate Shanghai easily via the excellent metro system - download a transit app for seamless travel

For more tips & info visit our FAQs by scanning here!



# Ready for pharma lift-off?



## Event location

**Shanghai New International Expo Center**

**SNIEC** No. 2345 Longyang Road, Pudong New Area, Shanghai, China

## Transportation

Take buses, metro lines and maglev to 'Longyang Road Station', around 600m from the SNIEC. Or take Metro Line 7 to 'Hua Mu Road Station' and use exit 2 to enter the SNIEC via Hall W5.

## What awaits you

- **3,600+ exhibitors** from across the entire pharma supply chain
- **110,000+ industry professionals** from 150+ countries
- **200+ international exhibitors** from 26 countries in upgraded pavilion
- **6 new featured areas** showcasing the latest industry trends
- **100+ conferences** and activities with 700+ expert speakers
- **Live machinery demonstrations** and product showcases
- **Advanced networking** through the Chat & Meet platform
- **Exclusive networking events** and plant visits

**The countdown begins** – see you in Shanghai for the ultimate pharma experience!

**Contact us**

