

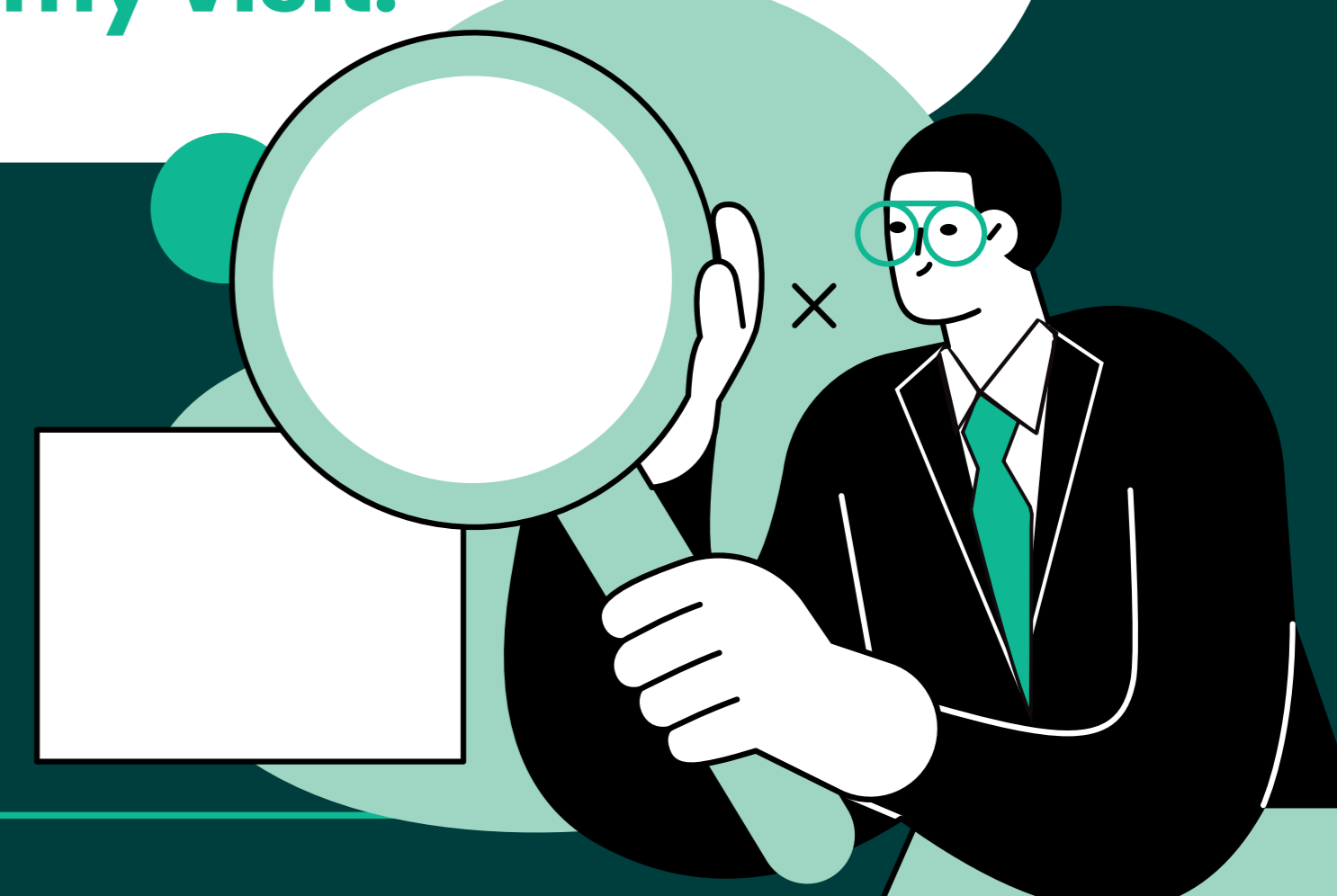
**You said.**

**We did!**

**"The show's massive growth is incredible, but navigating through the crowded halls is becoming quite challenging for efficiency."**



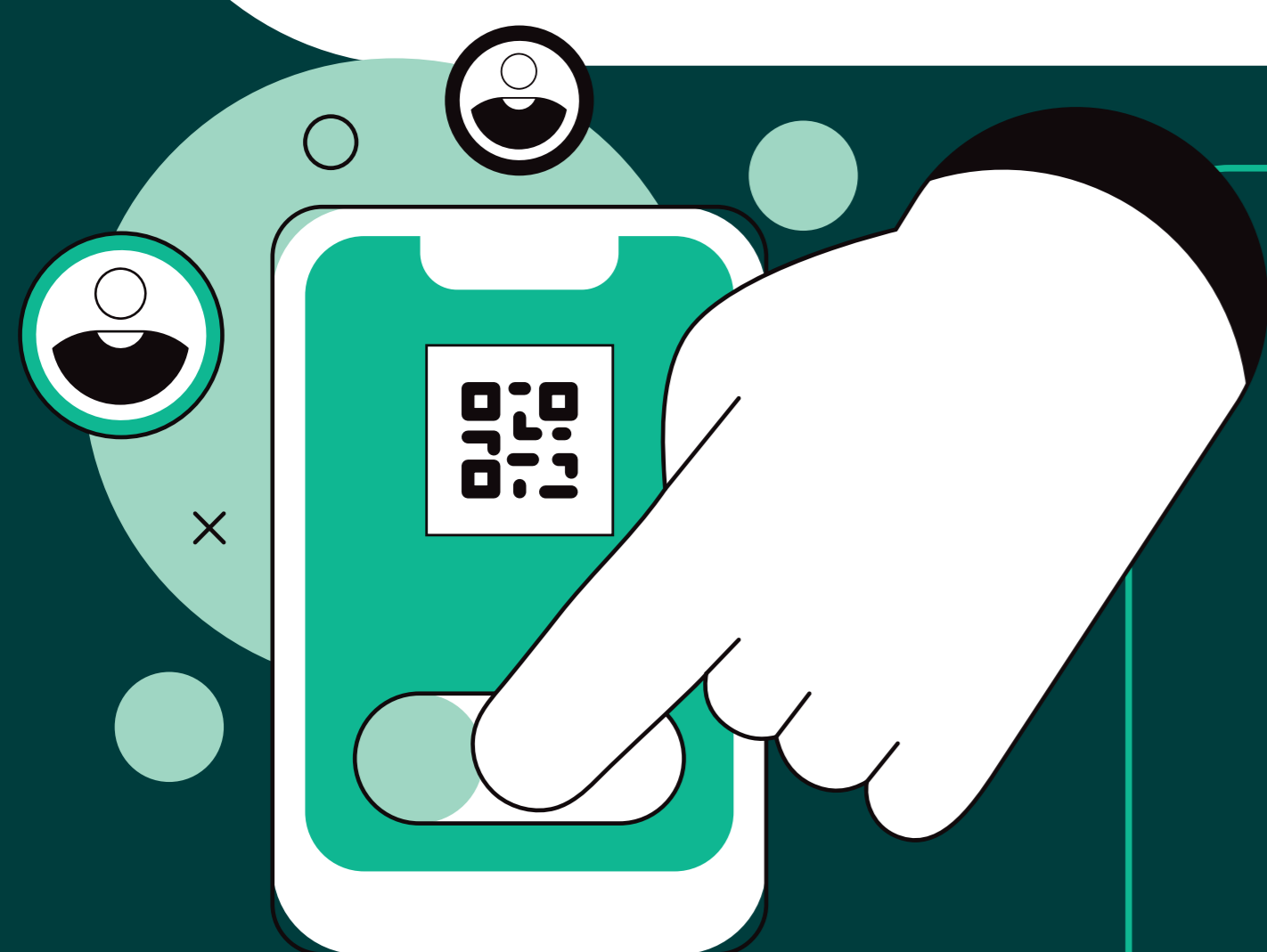
**"It would be great to explore more cutting-edge and innovative sectors during my visit."**



**In 2027, we are relocating to the National Exhibition and Convention Center (NECC) in Shanghai, a world-class mega venue with direct metro access, spacious modern halls, and enhanced facilities to give you a seamless, comfortable experience.**

**This year includes 5 new innovative zones ready for your exploration: TCM Ingredients & Slices, Frontier Technologies & Innovative Therapies, Medical Aesthetic Packaging, Drug-Device Combinations, and Smart Lab Space.**

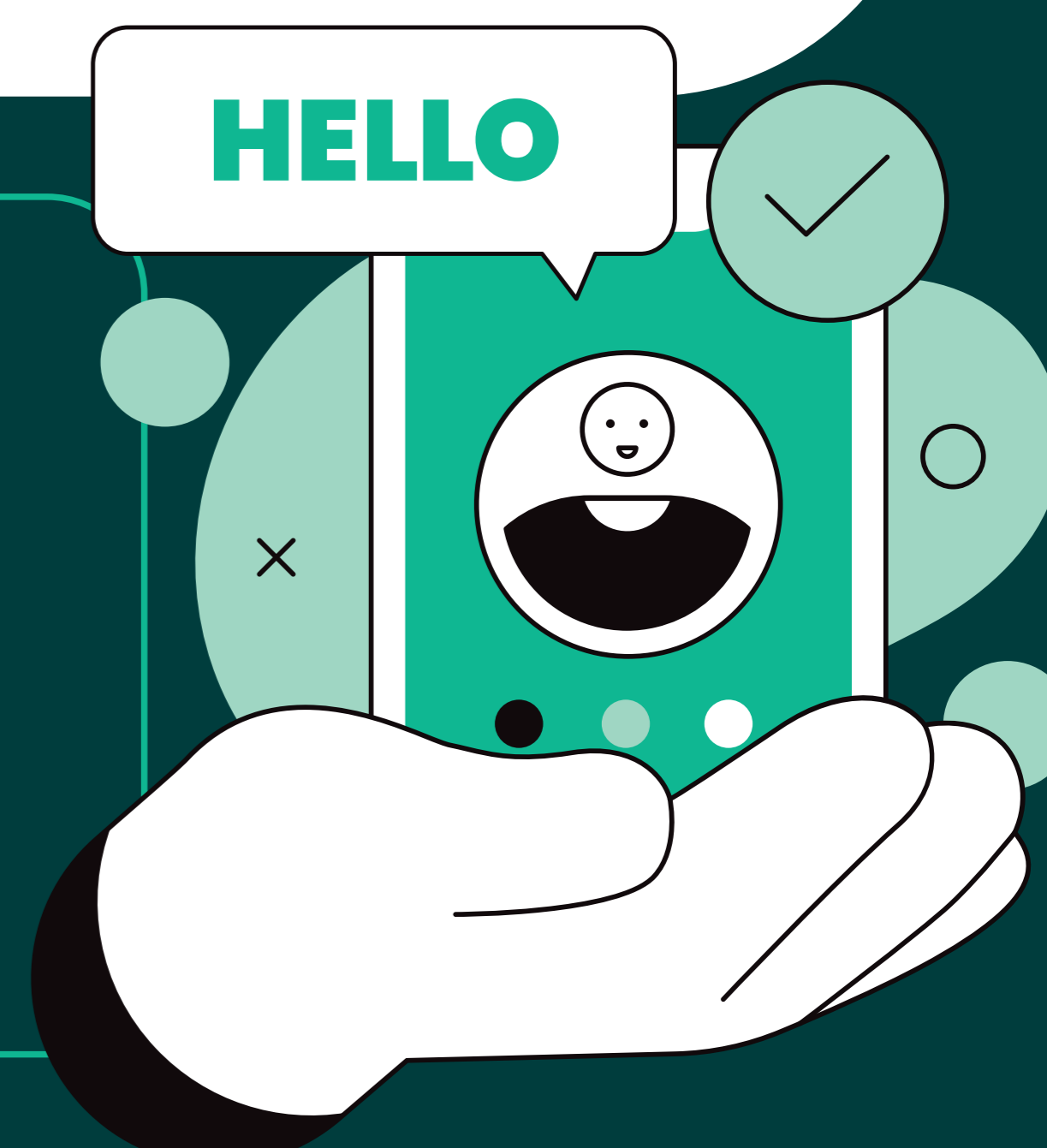
**"If the performance of the App can be further developed, it may make our connections with potential customers and suppliers smoother."**



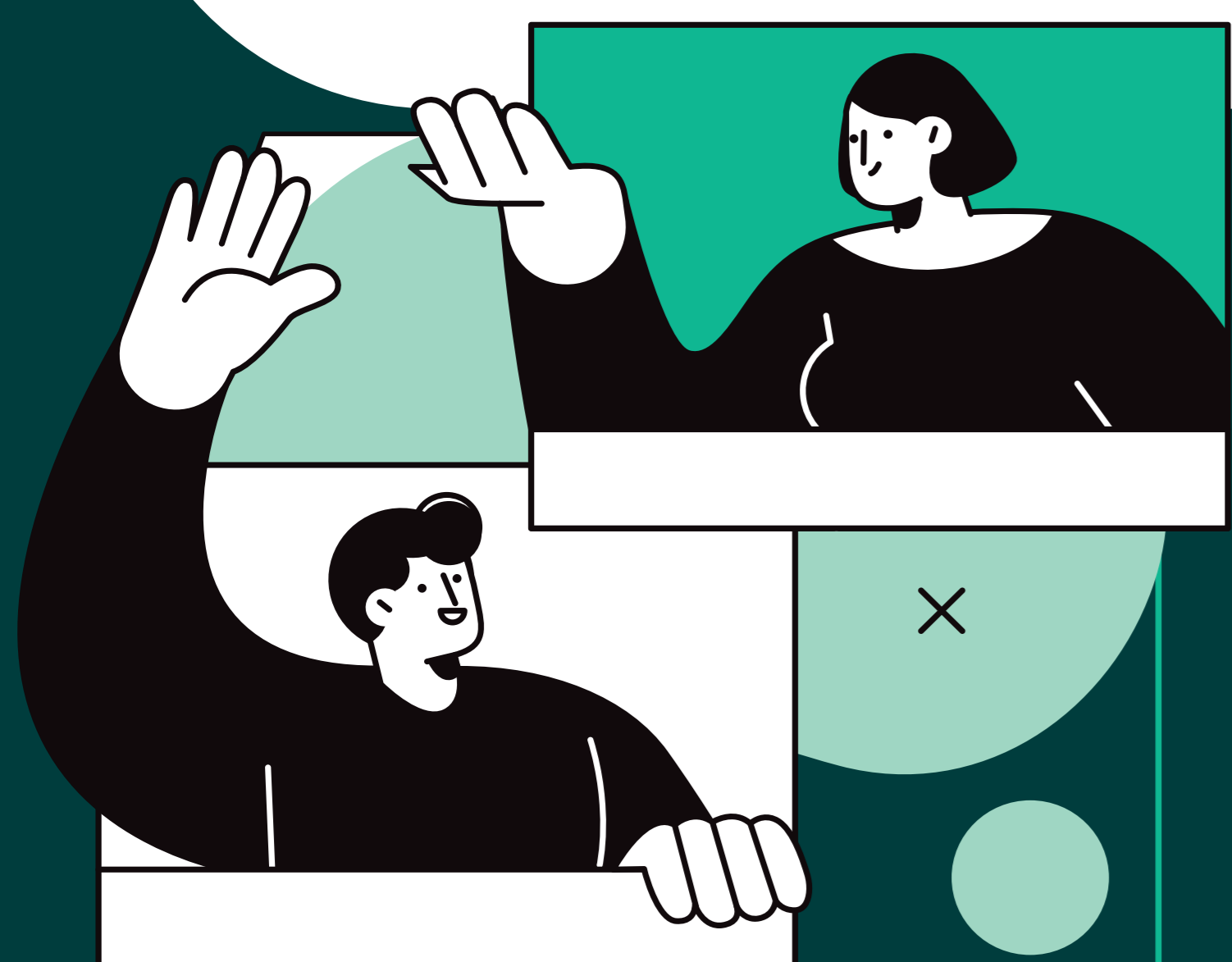
**We have updated the CPHI China app with enhanced networking and smart meeting scheduling features.**

**"Facilitate the understanding of market conditions and development of new markets."**

**There is an expanded English-language conference program featuring regulatory updates and market insights.**



**"We need qualified leads with clear purchasing intent and specific buying requirements."**



**We are bringing back the Natural Extracts Hosted Buyer Program, connecting international buyers with top Chinese manufacturers through 1-to-1 meetings.**

**"CPHI & PMEC is huge for one to be able to cover thoroughly, although I tried my best."**



**CPHI & PMEC extends to Shenzhen (Sept 16-18, 2026), giving you more exploration time to foster more new pharma business opportunities in South China.**